








ATG INVENTORY MANAGER

Save Time and Money

Monitor Tanks. Make Decisions. Manage Inventories.

OneView™ offers user-friendly, web-based inventory management applications that allow companies to monitor tank levels, schedule deliveries and better manage inventory needs. The turnkey ATG application shares data over the OneView™ platform, keeping you informed on the level, temperature, and condition of your tanks.

Key Features

-  Remotely Monitor Tank Levels
-  Detect ATG Tank Leaks & Line Leaks
-  Predictive Inventory Algorithms
-  Customized Dashboards
-  Trending Analytics & Reporting
-  Customized Alerts & Notifications
-  Capture Inventory and Compliance Data from Existing ATG Systems

Benefits



Improve Inventory Management

- Minimize site visits by remotely monitoring stock levels anytime, anywhere
- Take proactive measures to address critical inventory levels before they result in shortages
- Forecast inventory requirements and efficiently plan to dispatch and optimize routes



Environment Sustainability

- Supports compliance with environmental regulations by providing remote visibility and results of leak detection tests
- Prevent overfilling or underutilization of tanks to minimize waste and conserve valuable resources
- Optimize routes and minimize unnecessary trips to achieve cost savings and reduce carbon emissions



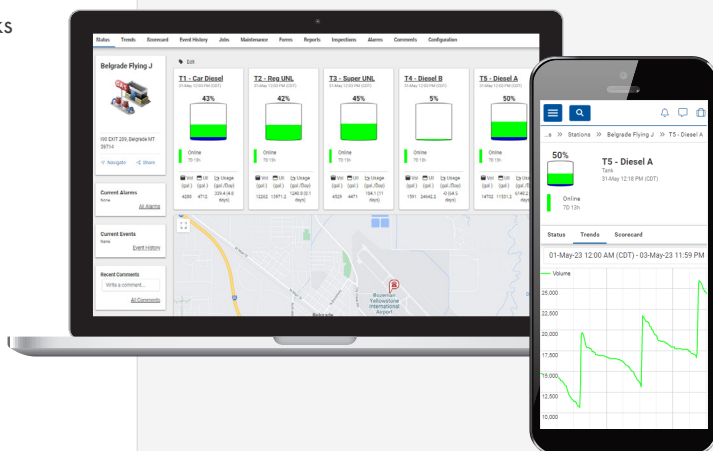
Enhance Operation Stability

- Remotely acquire information for detected leaks, overflows, or equipment malfunction helping to facilitate quicker action for maintenance or repairs, reducing down time
- Analyze tank data trends to facilitate thorough inspections and equipment servicing

Pedigree Technologies OneView™ lets you remotely monitor your tank levels, enabling quick responses to your most critical inventory needs while saving time and money.

How It Works

- ✓ On a single screen, view the current inventory levels of all your tanks
- ✓ OneView™ connects to existing ATG hardware at C-stores, combining tank level monitoring and leak detection
- ✓ Receive proactive e-mails or text messages when conditions require a response
- ✓ Customized alarms based on low or high tank volume, days-of-inventory, and water in the tank
- ✓ Reports when a delivery has been made
- ✓ Connects to ATGs through the serial port



TECHNICAL SPECIFICATIONS

PC-640



Connectivity	Cellular: 4G LTE CAT-M1 Bluetooth Low Energy Capable
Installation	Wire-in
Dimensions (WxDxH)	5.7 x 2.1 x 1.3 in (144.8 x 53.3 x 33 mm)
Weight	5 oz (141.7g)
Update Frequency	Every 15 Minutes
Battery	1000 mAh Lithium-ion
Internal Battery Life	1 Month
Electrical Specs	Operating Voltage: 9-30 VDC Power Consumption: Active Mode: 150 mA @ 12V Sleep Mode: 20 mA @ 12V Deep Sleep Mode: mA @ 12V
Temperature	-22 to 185°F (-30 to 85°C)
ATG Interface	RS232 / RS485 serial (multi-protocol support)
Certifications	FCC, IC, CE, PTCRB, RoHS, RCM